

TRUSHARE

TRUSHARE

User's Manual

Version:1.0

Table of Contents

1	OVERVIEW	3
2	PACKAGE CONTENTS.....	4
3	PHYSICAL DETAILS	4
4	WHAT YOU NEED	5
5	TRUSHARE PAIRING	5
5.1	AUTO PAIRING	5
5.2	MANUAL PAIRING.....	6
6	TRUSHARE MIRRORING.....	7
6.1	TRUSHARE MIRRORING	7
6.2	ADVANCED COLLABORATION WITH TRUCAST	8
7	WEB ADMIN.....	9
7.1	LOGIN ADMIN PAGE.....	9
7.2	SYSTEM STATUS.....	9
7.3	DEVICE SETUP	10
7.4	NETWORK SETUP	11
7.5	WiFi SETUP	11
7.6	CHANGE PASSWORDS.....	12
7.7	RESET TO DEFAULT.....	13
7.8	FIRMWARE UPGRADE.....	13
7.9	REBOOT SYSTEM	14
7.10	LOGOUT	15

1 Overview

TRUSHAR is a unique pairing solution to wirelessly connect an HDMI source to a TRUCAST device, enabling seamless collaboration in meetings and classrooms.

Connecting an HDMI cable to the TRUSHARE allows full mirroring of audio and video from supported HDMI sources to a display or projector, without any software installation or other configuration required.

Furthermore, you can utilize the advance features on the TRUCAST device such as the 4-to-1 projection, Annotation, WebSlides and Conference Control for better meeting room or classroom collaboration.

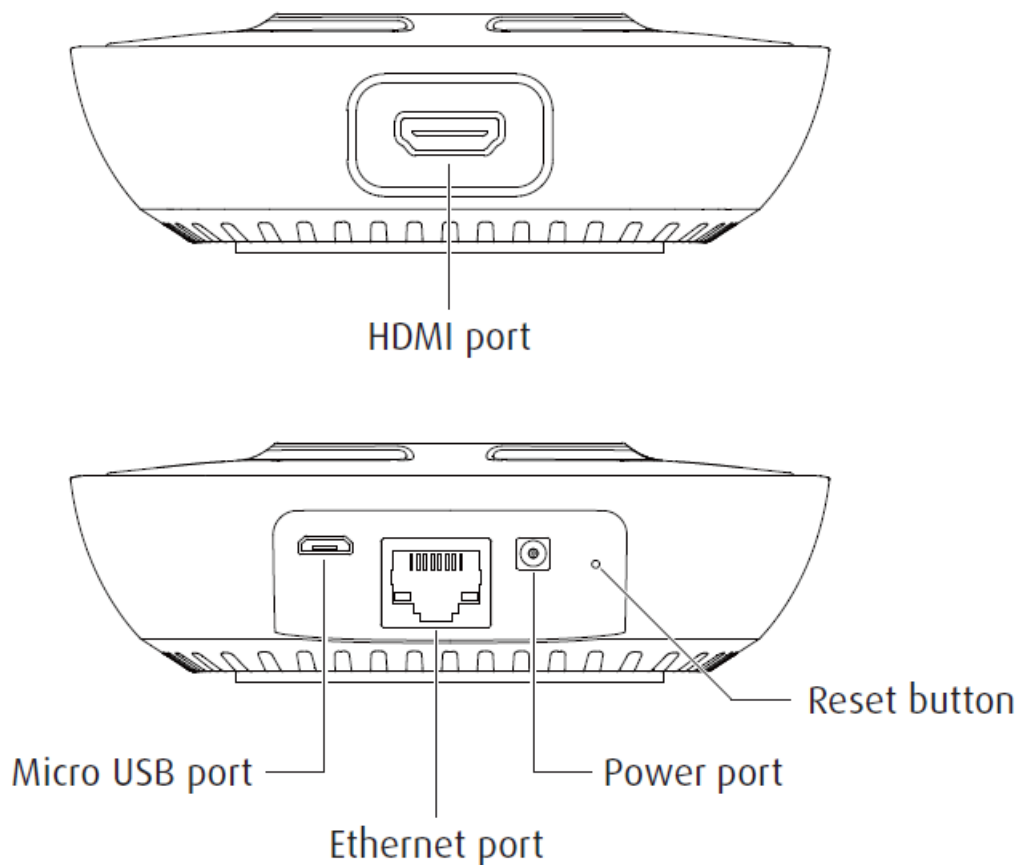
Key Features

- Wireless audio/video mirroring from HDMI video source. (Up to 1080p 30FPS)
- WiFi 802.1a/b/g/n (5G/2.4G WiFi Station Mode)
- Auto Pairing through USB.
- Support TRUCAST 4-to-1 quadrant projection.
- Support TRUCAST Conference Control feature.
- Support TRUCAST WebSlides feature.
- Support TRUCAST Annotation feature.
- Web Management and Web Firmware Upgrade.

2 Package Contents

- TRUSHARE device
- Power Adapter (DC +5V, 1.2A)
- Setup Guide
- CE DoC

3 Physical Details



	Description
Play/Stop Button	Press button to start/stop mirroring.
HDMI In	HDMI source input.
Micro USB	USB 2.0 port for device pairing.
Ethernet	10/100M RJ-45 port.
Power Jack	Power Jack 5V/1.2A
Reset Button	Hardware reset to factory default settings.

4 What You Need

- TRUCAST device
- Projector or display with VGA or HDMI interface
- HDMI source such as Document Camera, Digital Microscope, Laptop, or DVD Player.
- Micro USB cable, HDMI Cable

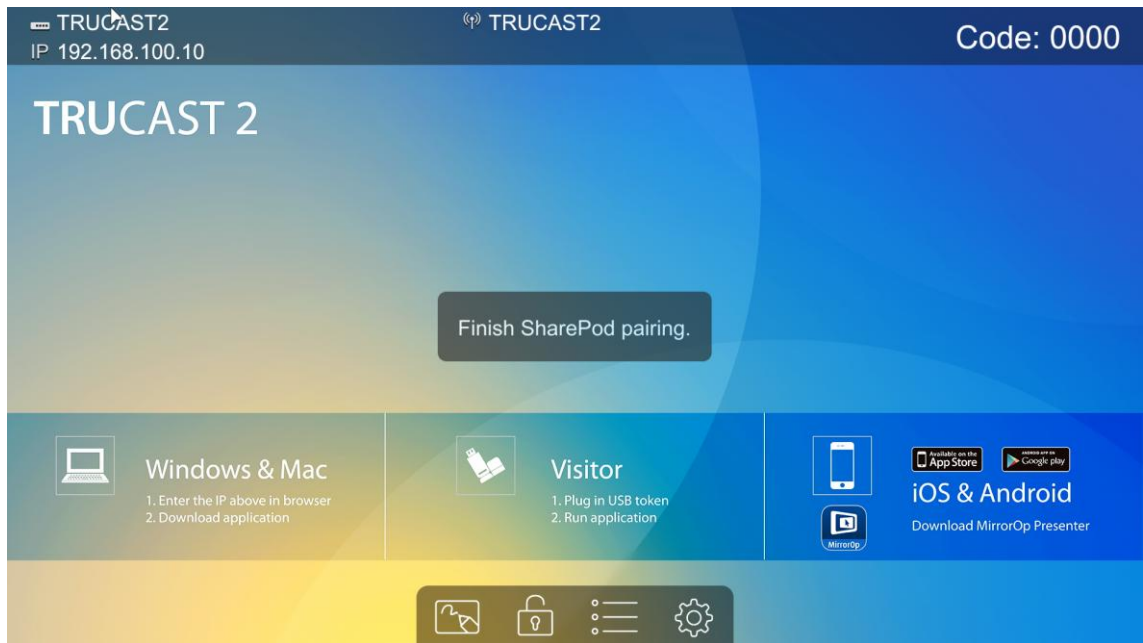
5 TRUSHARE pairing

5.1 Auto Pairing

Plug in the micro USB cable from TRUSHARE to the TRUCAST device, and pairing will begin automatically. The TRUCAST LED will show a long flashing red light while pairing is in process. Please wait until you can see the “Pairing successful” message on the TRUCAST start screen, and then remove the USB cable to complete the pairing.

Note:

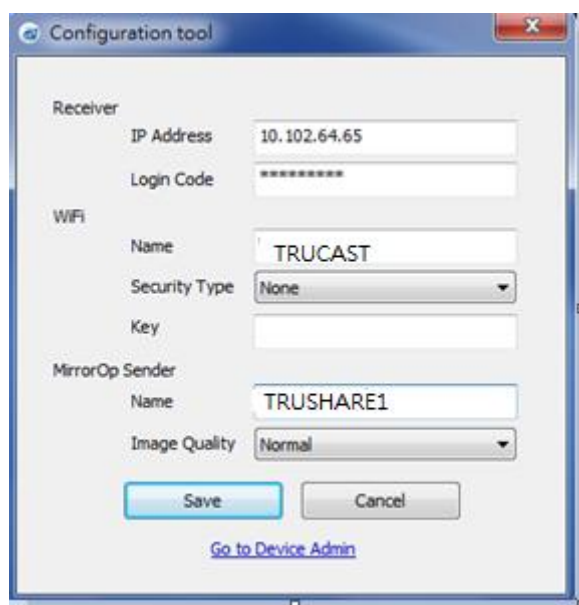
- a. Supports TRUCAST1, TRUCAST2, and TRUCAST3.
- b. Ensure the TRUCAST device firmware is updated to the latest version.
- c. Average pairing time is 20 seconds.



5.2 Manual pairing

Plug in the micro USB cable from TRUSHARE to laptop and launch the configuration tool from the USB storage, and then begin configuring the pairing information manually as below.

- **Receiver**
 - **IP Address:** the IP address of target TRUCAST device
 - **Login Code:** the login code of target TRUCAST device
- **WiFi**
 - **Name :** the WiFi name of target WiFi Access Point device
 - **Security Type :** WiFi Security type, such as WEP/WPA-PSK/WPA2-PSK
 - **Key :** Security key of target WiFi device
- **MirrorOp Sender**
 - **Sender Name :** The name of TRUSHARE device
 - **Image Quality :** High / Normal
- **<Save>**
- **<Cancel>**
- **<Go to Device Admin>:** Go to TRUSHARE web admin page.



6 TRUSHARE Mirroring

6.1 TRUSHARE Mirroring

- 1) After powering on the TRUSHARE, it will then connect to the target TRUCAST device. The short blinking blue LED indicates the system is trying to connect to target TRUCAST device. It will switch to static blue LED when it is connected.
- 2) Plug in the HDMI cable to the supported HDMI source, and mirroring will begin automatically if the TRUCAST device is in standby mode, or you can press the PLAY button to manually begin mirroring. The blue LED indicates that the system is ready for mirroring and it will switch to red LED when mirroring.

Note:

- a. Please pair the TRUSHARE with target TRUCAST device before the connection.
- b. Please use the power adaptor to supply the power to TRUSHARE device.
- c. Supports HDMI 720p, 1080i/1080p.
- d. Does not support HDCP content.
- e. If interference causes the TRUSHARE to stop the connection to the TRUCAST, please press the button again to resume the connection.

f. LED behavior and troubleshooting:

LED	Description	Troubleshooting
Blue	Ready for Mirroring	
Red	Mirroring	
Short Blinking Blue (0.5 sec)	Connecting	Pairing with TRUCAST device.
Long Blinking Blue (2 sec)	Waiting for HDMI	Check HDMI source.
Short Blinking Red (0.5 sec)	Error (Wrong login code or rejected by Conference Control)	Pair with TRUCAST device again, or disable the Conference Control.
Long Blinking Red (2 sec)	Pairing Mode	

6.2 Advanced Collaboration with TRUCAST

1) Conference Control:

Choose the TRUSAHRE screen from TRUCAST Web Conference Control page or OSD to start the full screen/4-to-1 projection. The meeting host or teacher can moderate the meeting in an efficient way.

If TRUCAST is rejected by Conference Control mode while pressing the Play button, the LED will switch to short blinking red LED to notify the user.

2) 4-to-1 projection:

Choose the TRUSHARE screen from TRUCAST Web Conference Control page or OSD to start the 4-to-1 projection.

3) WebSlides:

Broadcast and browse the TRUSHARE screen from WebSlides page. This also allows saving a screenshot locally.

4) Annotation:

Make annotation on TRUSHARE screen from TRUCAST pen menu (if available) and save the screenshot to local USB drive.

7 Web Admin

7.1 Login Admin Page

- 1) Connect the TRUSHARE to the same network of your laptop, then open a browser window to visit the TRUSHARE web admin page.
- 2) Enter the password to login the admin page. (default password: admin)

TRUSHARE

TRUSHARE > Admin

Admin

User Name admin

Password Login

(Default password: admin)

Copyright © 2016. All Rights Reserved

7.2 System Status

- 1) Click on “System Status” option, it will show current system status.

Model Name: Product model name

Versions:

- **Firmware version no.:** Product firmware version number.

Network Status:

- **IP address :** IP address of TRUSHARE device.
- **Subnet Mask :** subnet mask
- **Default Gateway :** default gateway
- **Wireless MAC address :** wireless MAC address
- **Wire MAC address :** wire MAC address

WiFi Information:

- **WiFi Station Status :** Current status or the connected WiFi AP name.

TRUSHARE

TRUSHARE > Admin > System Status Logout »

System Status	Model Name	TRUSHARE
Device Setup	Versions	
Network Setup	Firmware Version	1.0.2.5
WiFi Setup	Network Status	
Change Passwords	IP Address	10.102.64.86
Reset to Default	Subnet Mask	255.255.255.0
Firmware Upgrade	Default Gateway	10.102.64.1
⏻ Reboot System	Wireless MAC Address	48:A9:D2:83:56:DE
	Wire MAC Address	00:12:5F:00:FF:27
	WiFi information	
	WiFi Station Status	Disconnected

Copyright © 2016. All Rights Reserved

7.3 Device Setup

- Click on “Device Setup” option, it will show the device setting items.
 - <Receiver IP Address>**: The IP address of target TRUCAST device.
 - <Login Code>**: The login code of target TRUCAST device.
 - <Sender Name>**: The name of the connected TRUSHARE
 - <Image Quality>**: Normal / High.

TRUSHARE

TRUSHARE > Admin > WiFi Setup Logout »

System Status	Wireless LAN	<input type="radio"/> Enable <input type="radio"/> Disable
Device Setup	Station	Connect to Existing AP
Network Setup		Existing AP SSID
WiFi Setup		TRUCAST1
Change Passwords		Scan
Reset to Default	Encryption	Disable ▼
Firmware Upgrade	Key	<input type="text"/>
⏻ Reboot System		<input checked="" type="checkbox"/> Hide characters
		Apply Cancel

Copyright © 2016. All Rights Reserved

7.4 Network Setup

1) Click on “Network Setup” option, it will show the network setting items.

< IP Setup >

- You can select “obtain IP address automatically” or “Use the following IP address” to manually enter the IP address.

The default setting is as follows:

- IP Address: 192.168.100.10.
- Subnet Mask: 255.255.255.0
- Default Gateway: 192.168.100.10
- DNS Server: 192.168.100.10

TRUSHARE

TRUSHARE > Admin > Network Setup Logout »

System Status
Device Setup
Network Setup
WiFi Setup
Change Passwords
Reset to Default
Firmware Upgrade
Reboot System

IP Setup

Obtain an IP address automatically Use the following IP address

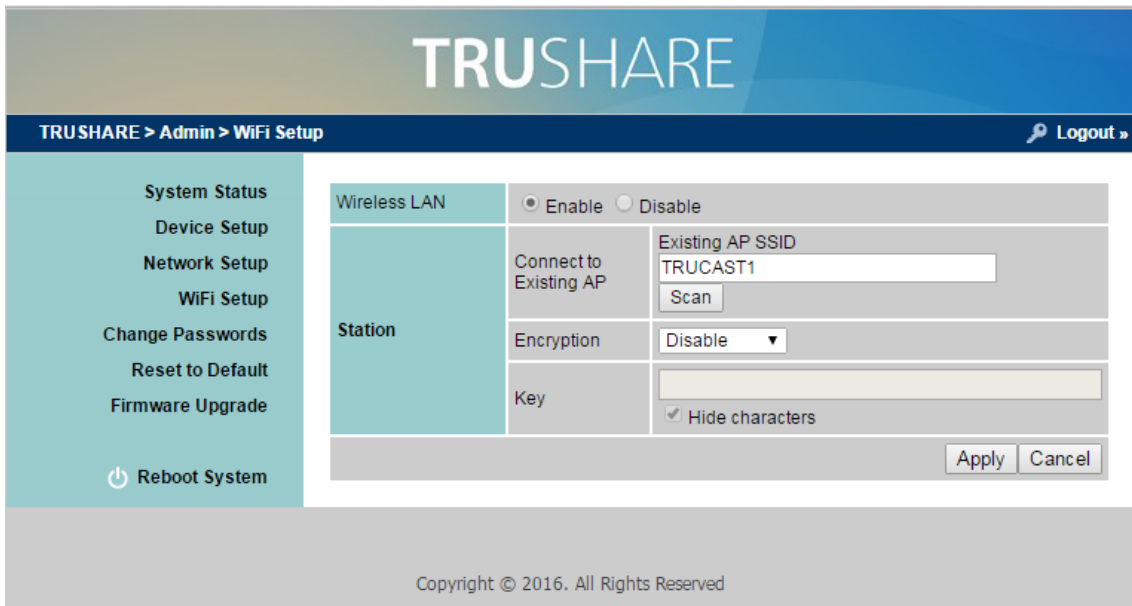
IP Address	192	168	100	11
Subnet Mask	255	255	255	0
Default Gateway	192	168	100	10
DNS Server	192	168	100	10

Apply Cancel

Copyright © 2016. All Rights Reserved

7.5 WiFi Setup

- Wireless LAN: The default setting is “Enable”
- Connect to Existing AP: Press the “Scan” button to scan all available AP devices, and then select the WiFi AP that you want to connect to.
Encryption: Select “Disable” or one of WEP/WPA PSK/WPA2 PSK
Key: If Encryption is enabled, you have to enter a key according to the encryption mode you selected. (If the length of the key entered is not sufficient or too long, a warning message will appear.)
Note: The Encryption and Key information must be consistent to the existing AP configuration.

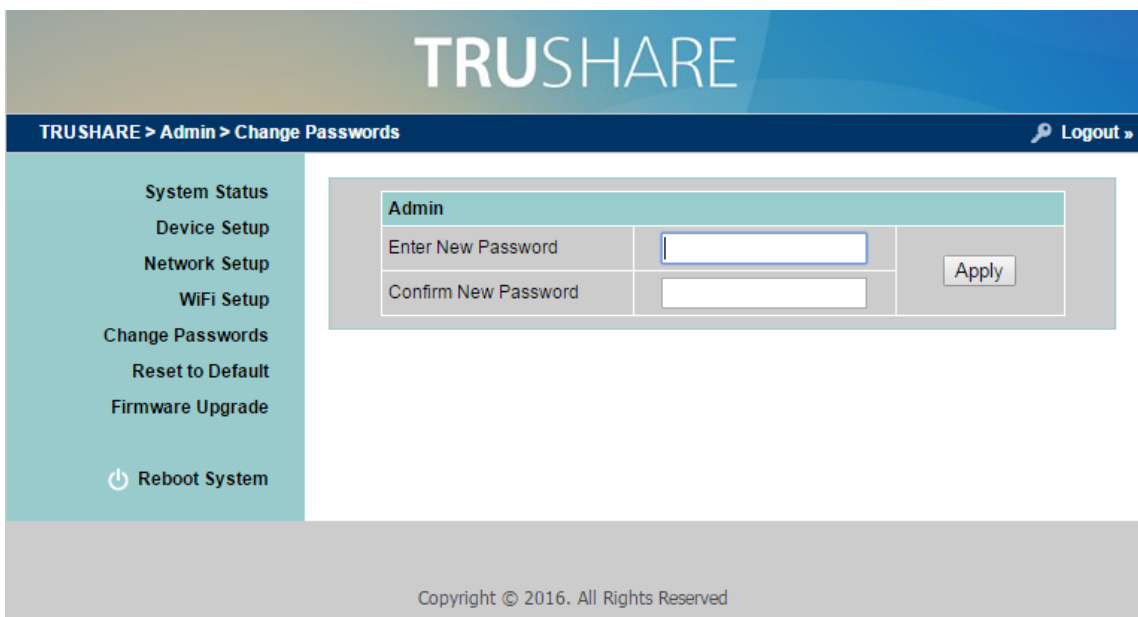


Note:

1. The WiFi 5G DFS band is not supported.

7.6 Change Passwords

- 1) Click on “Change Password” option, you can change the password setting for “Admin”.
 - **<Enter New Password>** (Length: up to 8 characters)
 - **<Confirm New Password>**
 - **<Apply>**: Confirm and Save modifications.



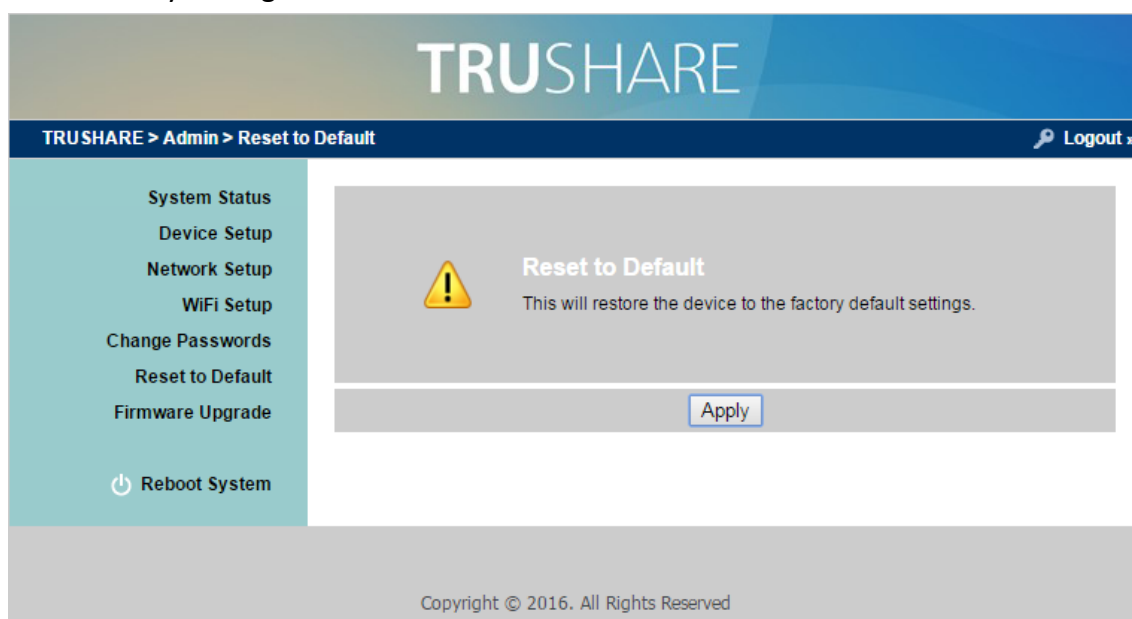
7.7 Reset to Default

1) Click on “Reset to Default” option to restore factory default settings.

<Apply>: Confirm and take action.

***** You can also restore factory default setting from TRUSHARE box reset button. You can find the reset button underneath the box. Please follow below procedures.**

1. Press **[Reset]** button and **Hold**.
2. Turn on TRUCAST TRUSHARE box.
3. Press more than 10 seconds and release **[Reset]** button.
4. Factory settings will then be restored.



7.8 Firmware Upgrade

- 1) **<Firmware Version> <Release Date>** Shows the current firmware on the TRUSHARE.
- 2) **<Check for Update>** Check the latest firmware available on the server.
- 3) Firmware Upgrade
 1. First, download the most recent firmware version available to your local drive.
 2. Click **<Browse>** to specify firmware file you want to upgrade to.
 3. Click **<Upgrade>** to start.
 4. A warning message and count down counter will appear on the screen.
 5. After a few minutes, a complete message will show on the screen.
 6. Restart TRUSHARE to take effect.

TRUSHARE

TRUSHARE > Admin > Firmware Upgrade Logout »

- System Status
- Device Setup
- Network Setup
- WiFi Setup
- Change Passwords
- Reset to Default
- Firmware Upgrade
- Reboot System

Firmware Upgrade

Firmware Version	1.0.2.5	<input type="button" value="Check for Updates"/>
Release Date	20160824	

Please stop the projection function first before you apply the Upgrade button!!

File Name: No file chosen

Copyright © 2016. All Rights Reserved



Please wait while System burns new firmware into your device.

Warning: It needs to take 2-5 minutes to burn the file you transferred into flash memory. **During this period, any interrupt such as shut down or reboot the system will cause system crash!!**

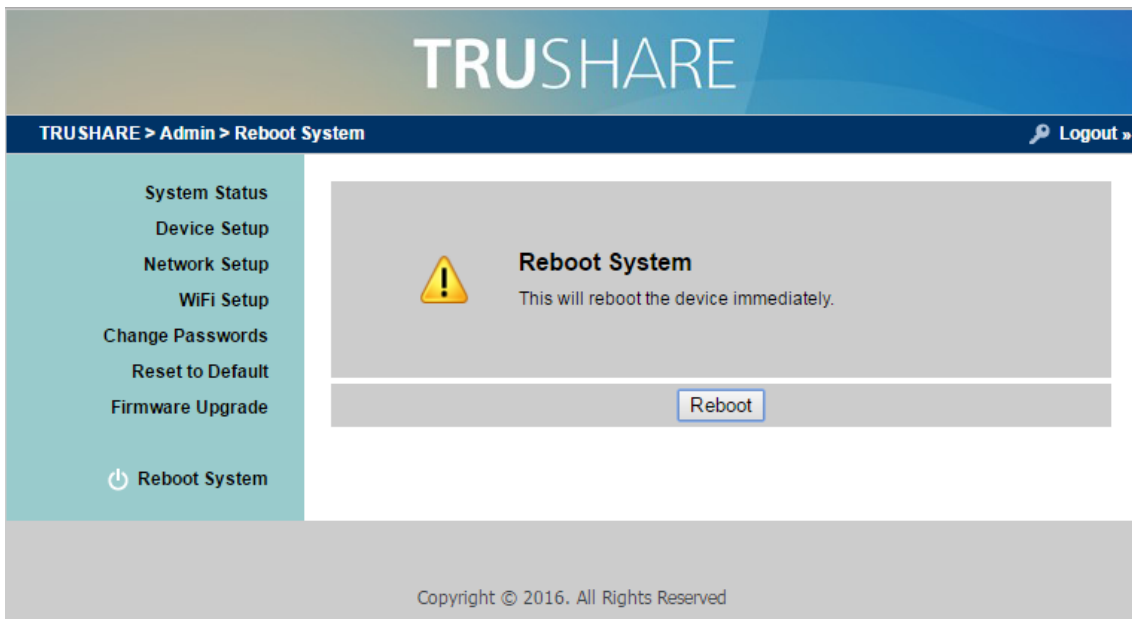
Estimated Time remaining: 4: 30 seconds



Warning: Do not power off TRUCAST TRUSHARE while firmware upgrade in progress, otherwise your TRUSHARE will be damaged and must be returned to the vendor for service and repair.

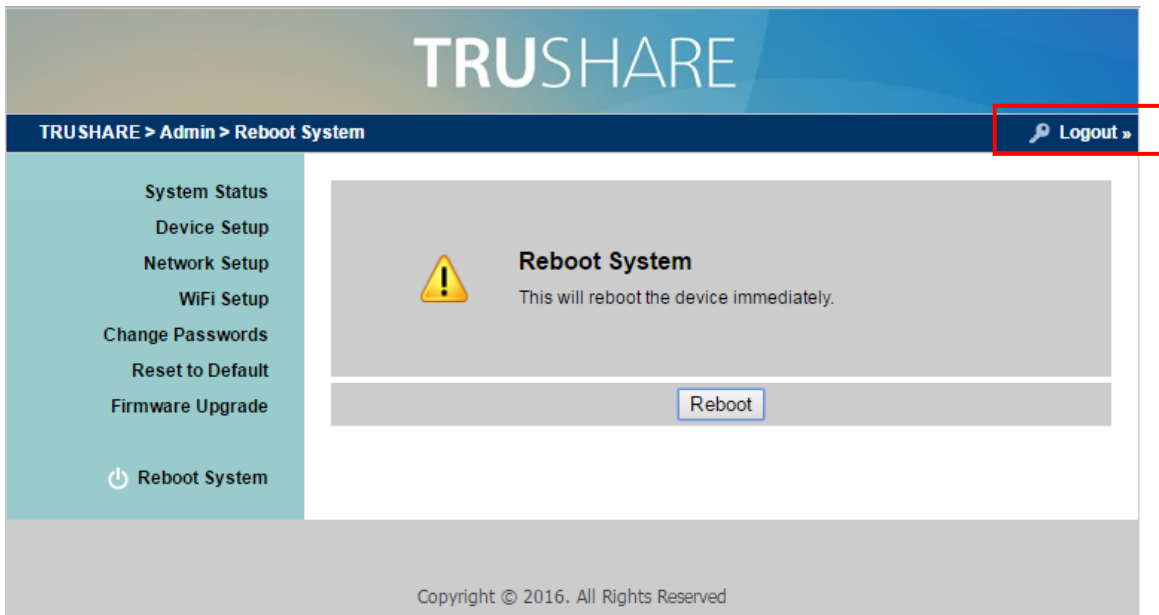
7.9 Reboot System

- ◆ Click on “Reboot System” option to restart the TRUSHARE.
- ◆ **Click on <Reboot >button:** reboot system automatically.



7.10 Logout

- 1) Click on “logout” on the upper right corner to logout of the administration webpage and return back to the web management home page.



FCC

Federal Communication Commission Interference Statement

This equipment has been tested and found to comply with the limits for a Class B digital device, pursuant to Part 15 of the FCC Rules. These limits are designed to provide reasonable protection against harmful interference in a residential installation. This equipment generates, uses and can radiate radio frequency energy and, if not installed and used in accordance with the instructions, may cause harmful interference to radio communications. However, there is no guarantee that interference will not occur in a particular installation. If this equipment does cause harmful interference to radio or television reception, which can be determined by turning the equipment off and on, the user is encouraged to try to correct the interference by one of the following measures:

- Reorient or relocate the receiving antenna.
- Increase the separation between the equipment and receiver.
- Connect the equipment into an outlet on a circuit different from that to which the receiver is connected.
- Consult the dealer or an experienced radio/TV technician for help.

This device complies with Part 15 of the FCC Rules. Operation is subject to the following two conditions: (1) This device may not cause harmful interference, and (2) this device must accept any interference received, including interference that may cause undesired operation.

This device and its antenna(s) must not be co-located or operating in conjunction with any other antenna or transmitter.

For product available in the USA/Canada market, only channel 1~11 can be operated. Selection of other channels is not possible.

This device is restricted to indoor use.

IMPORTANT NOTE:

FCC Radiation Exposure Statement:

This equipment complies with FCC radiation exposure limits set forth for an uncontrolled environment. This equipment should be installed and operated with minimum distance **20cm** between the radiator & your body.